

FREEHOLD



House - Mid Terrace (EPC Rating: C)

# 11 PORTSOY PLACE, GLASGOW, G13 4LN

Offers over

**£155,000**

## FEATURES

- Spacious bedrooms, modern design
- Large living/dining area
- Walk-in Wardrobe
- Located in Portsoy Place
- Lovely kitchen, walk-in condition
- Enclosed rear garden
- Modern throughout
- Close to amenities



**SWEET  
HOME**



# 2 Bedroom House - Mid Terrace located in Glasgow

Ross Pollock of Sweet Home Scotland brings to market this stunning two bedroom inner terrace property, located within Peterson Park.

Welcome to this well-presented mid-terrace home on Portsoy Place.

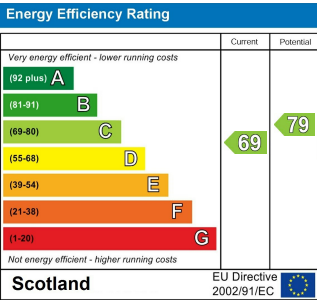
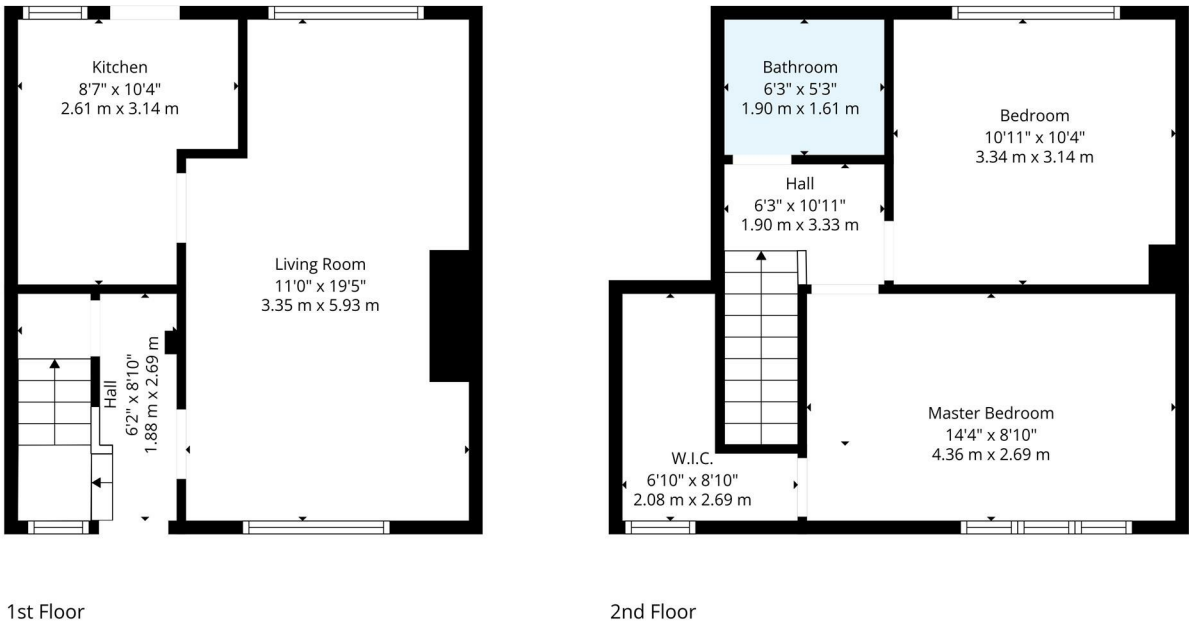
The property has a clean, modern finish and is in walk-in condition, offering an easy move for its next owner.

The ground floor features a comfortable living room that opens into a dining area, creating a practical space for everyday use or hosting guests. The kitchen is neatly laid out and well-equipped, with plenty of room for cooking and casual meals.

Upstairs, the bedrooms are a good size and feel bright and comfortable, providing plenty of space for rest and storage.

Call us on  
**07717504350**  
[sales@sweet-home.co.uk](mailto:sales@sweet-home.co.uk)  
<https://sweet-home.co.uk/>

Council Tax Band  
**C**



Agents Note: Whilst every care has been taken to prepare these particulars, they are for guidance purposes only. All measurements are approximate and are for general guidance purposes only and whilst every care has been taken to ensure their accuracy, they should not be relied upon and potential buyers are advised to recheck the measurements.



**TOTAL: 716 sq. ft, 67 m2**  
 1st floor: 341 sq. ft, 32 m2, 2nd floor: 375 sq. ft, 35 m2  
 EXCLUDED AREAS: WALLS: 79 sq. ft, 7 m2  
 Floor Plan Created By Cubicasa App. Measurements Deemed Highly Reliable But Not Guaranteed.

